



**GOALS**

- Implement an antibiotic stewardship program (ASP)
- Reduce hospital multi-drug resistant organism (MDRO) infection and *Clostridium difficile* Infection (CDI) by 20%, from a 2014 baseline

**OBJECTIVES**

To achieve its stated goals, NYSPFP will work with hospitals toward the following objectives:

- Implementing all elements of the Centers for Disease Control’s (CDC) “Core Elements of Antibiotic Stewardship” as part of the hospital’s ASP program by September 2018
- Reduce CDI by 20% by September 2018
- Reduce MDRO infections, particularly MRSA, by 20% by September 2018

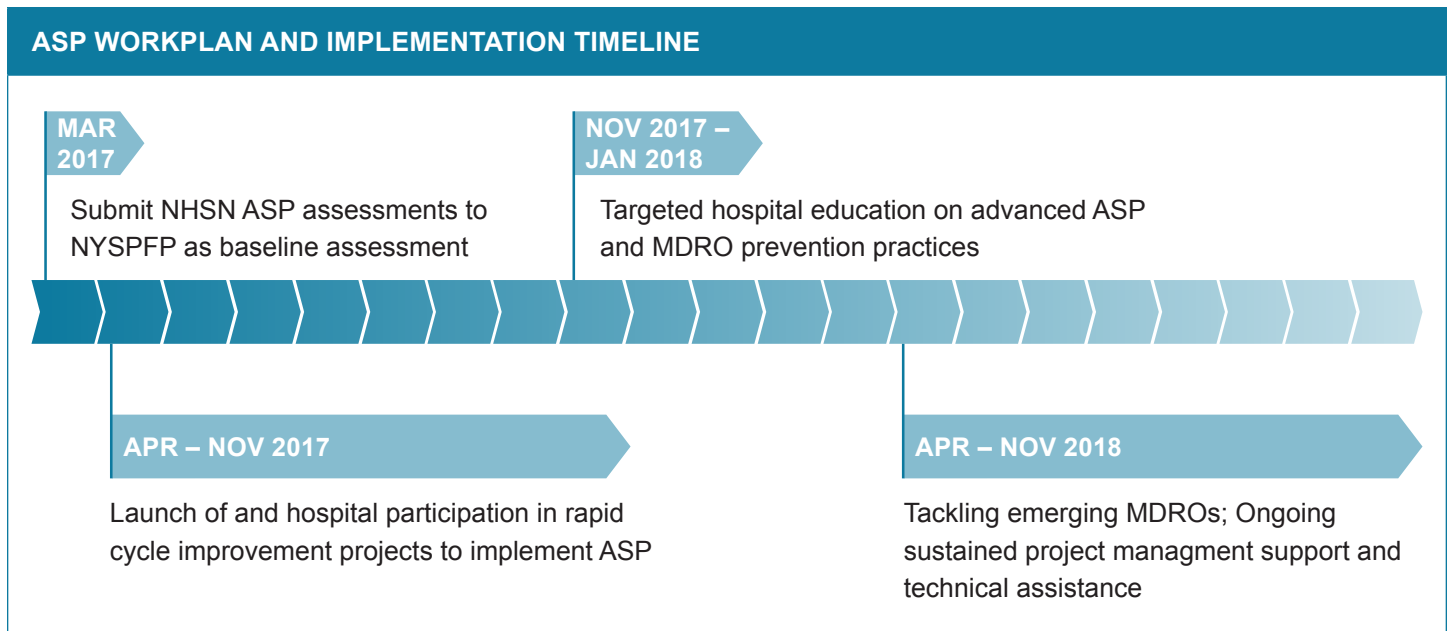
**THE NYSPFP APPROACH**

NYSPFP will support hospitals to implement effective antibiotic stewardship programs and infection prevention practices through:

- Providing education on the components of the Centers for Disease Control and Prevention’s (CDC) “Core Elements of Hospital Stewardship Programs”.
- Working with hospitals to identify and address organizational challenges to implementing effective ASP.
- Supporting hospitals in creating specific action plans to implement the core elements of ASP
- Providing educational programming on successful strategies to reduce the rate of MDRO, particularly MRSA and CDI infections.
- Assisting hospitals’ efforts to implement the “Core Elements of Hospital Stewardship Programs” through participation in rapid cycle improvement projects, designed to assist hospitals to implement the core elements of ASP. The rapid cycle improvement project will take a three track approach; each track will focus on different core elements and hospitals can choose which track best fits their needs. Throughout all tracks, strategies to provide education to clinicians, patients, and families, on each core element, will be provided.

Refer to the table below for more details on the different tracks available to hospitals:

ANTIBIOTIC STEWARDSHIP PROGRAM RAPID CYCLE IMPROVEMENT PROJECTS		
<p><b>Phase 1</b></p> <ul style="list-style-type: none"> <li>• Leadership commitment</li> <li>• Accountability</li> <li>• Drug expertise</li> </ul>	<p><b>Phase 2</b></p> <ul style="list-style-type: none"> <li>• Actions to support optimal antibiotic use</li> </ul>	<p><b>Phase 3</b></p> <ul style="list-style-type: none"> <li>• Tracking and monitoring antibiotic prescribing, use, and resistance</li> <li>• Reporting information on improving antibiotic use and resistance</li> </ul>
Education of Clinicians and Patients and Families		



## MEASUREMENT

Monthly data collection submitted through the National Healthcare Safety Network (NHSN) will include:

- CDI
  - CDI SIR
  - CDI healthcare facility-onset incidence rate
- MDRO: Methicillin Resistant *Staphylococcus aureus* (MRSA)
  - Facility specific MRSA bloodstream infection incidence SIR
  - MRSA
- ASP and MDRO infection prevention practices
  - Baseline and follow up assessments to determine implementation of ASP practices and other infection-prevention related practices